

# E<sup>2</sup> - simply connected

The new generation of faucets  
from SCHELL



# Unique and efficient: the new faucets generation E<sup>2</sup>

## With innovative technology, integrated Bluetooth® and direct control via app

The new faucets generation from SCHELL sets the standards to follow when it comes to forward-looking technologies and usability. An intuitive app, accurate operation and a striking design – E<sup>2</sup> is a truly impressive package.

### Perfect for everyday practice

With its factory-fitted Bluetooth® module, the new generation of faucets offers intuitive, real-time parameter adjustment plus logging via the corresponding app. The new Time-of-Flight (ToF) sensor technology used ensures accurate operation with no accidental activation even when using reflective vests.

### XERIS E<sup>2</sup>, CELIS E<sup>2</sup> and PURIS E<sup>2</sup>

The new E<sup>2</sup> generation comprises wash basin taps from SCHELL's familiar XERIS, CELIS and PURIS series. These new taps are equipped with mechanical hot water limiting, with XERIS E<sup>2</sup>-T also featuring a ThermoProtect thermostat.

### Benefits for building operators, facility managers, planners and tradespersons:

- Improved overview of sanitary facilities and faucets in buildings
- Local support for maintaining drinking water hygiene and specified normal operation
- Greater flexibility and better plannability for standards-compliant stagnation flushes
- Simplifies the record-keeping process needed for legal compliance with convenient logging of activated flushings and water consumption (calculated)
- Clearly structured, detailed data analysis in the app
- Innovative ToF Sensor (Time-of-Flight) for highly accurate activation without disruptions due to reflections or light reflections from e. g. reflective vests
- Settings can be adjusted to match the individual local circumstances
- Reliable protection for users: anti-scalding protection with hot water limiting or the ThermoProtect thermostat
- Reduction to operating costs: water-saving faucets reduce water and utility costs
- Real-time configuration of faucet groups or individual faucets with an intuitive app
- Even faster parameterisation possible with three preconfigured operating modes
- Attractive price/performance point



XERIS E<sup>2</sup>-T electronic wash basin tap



CELIS E<sup>2</sup> electronic wash basin tap



PURIS E<sup>2</sup> electronic wash basin tap



# Impressive benefits of E<sup>2</sup>

## Take an in-depth look at the new generation

From Bluetooth® inside to Time-of-Flight sensors, the many new and improved features introduced by E<sup>2</sup> offer a wide range of options for all installation locations and users.

### Bluetooth® inside

All faucets in the new generation are equipped with Bluetooth® as standard. This means that a **direct connection** can be established **between the faucet and the app**. Faucets can therefore be put into operation and parameterized in seconds.

### Accurate operation

Thanks to the innovative **Time-of-Flight technology**, operation of the faucets is ultra-accurate, making accidental activation due to light reflections such as from reflective vests, etc. a thing of the past. The compact and robust sensor module also has an impressive **IP67** rating.

### Technician-friendly app

Every effort has been made to develop an app with an especially technician-friendly design. The app can be used to **set parameters** on individual faucets **via Bluetooth®** and **monitor** the faucet status. The group manager function saves even more time during configuration.

### Saving water

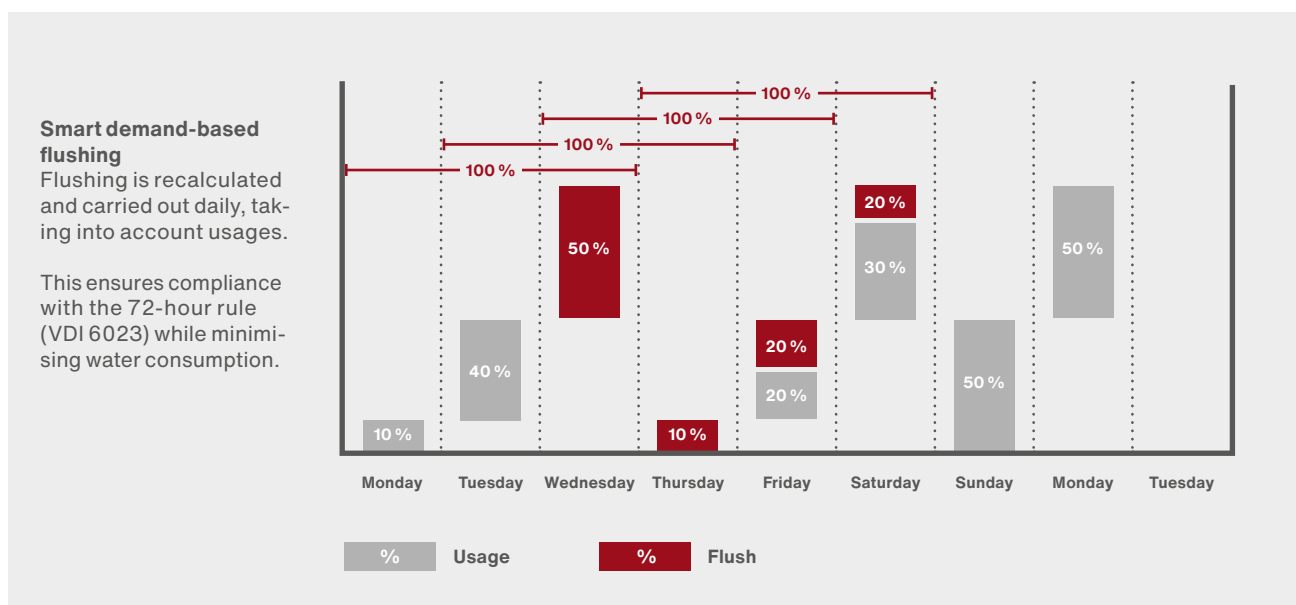
Three preconfigured **operating modes** make it especially easy to set parameters on E<sup>2</sup> faucets. These are the **'Save water' mode**, the **'Save electricity' mode** and the **'Comfort' mode**. Adjustments to settings can be customised even further in **expert mode**.

### Stagnation flush

New setup options now offer the right solution for any use case: **scheduled flushes**, **cyclic flushes** or **smart demand-based flushing**.

### Smart demand-based flushing

The perfect **symbiosis of drinking water hygiene and saving water**: Avoids stagnation periods greater than 72 hours (VDI 6023). Flushes the remaining flushing time every day before the 72 hours have elapsed, taking into account the quantities of the previous days. Flushing is skipped if usage levels are high enough.





### Hot water limiting

All HD-M faucets in the new generation feature mechanical hot water limiting, which means the maximum hot water proportion **can be set individually** for the faucet. XERIS E<sup>2</sup>-T is also equipped with a ThermoProtect thermostat with reliable, accurate to the degree anti-scalding protection and immediate water stop if cold water supply fails.

### Attractive design

The new generation exhibits a timeless design that has been highly sophisticated to include features like a robust, **vandal-proof** all-metal housing with **anti-theft**, recessed flow regulator and an easy-to-clean surface.



An overview of all the benefits can be found here.

# An overview of the E<sup>2</sup> app

The app makes building management both time-saving and convenient

Rapid configuration of stagnation flushes, reliable logging and everything visible at a glance: all of this and more is offered by the new E<sup>2</sup> app. The integrated Bluetooth® technology creates a direct connection between the faucet and the app.

## 1. Predefined operating modes for parameter setting

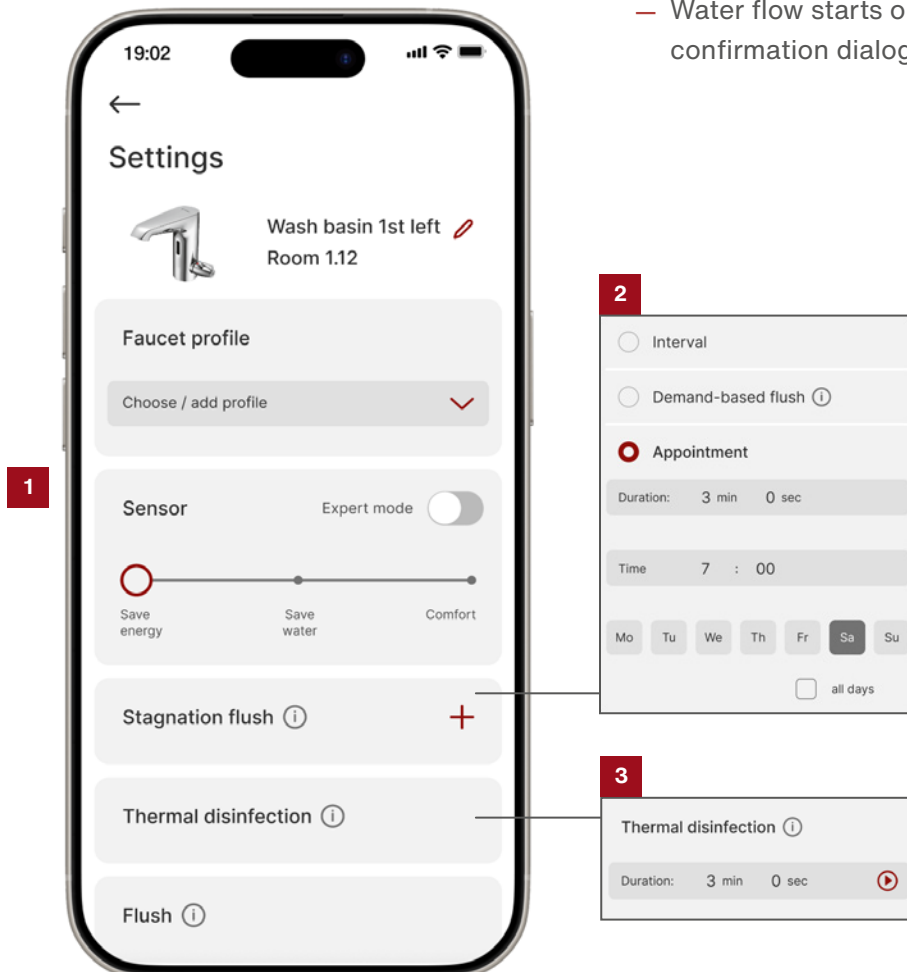
- ‘Save water’ mode: to cut consumption, the flow of water stops quickly when the user moves out of sensor range
- ‘Save electricity’ mode: power-saving sensor frequency for a long battery life
- ‘Comfort’ mode: quick start and long flow of water for user-friendly operation
- Expert mode: customised configuration of options to match local circumstances and customer needs

## 2. Set up stagnation flushes

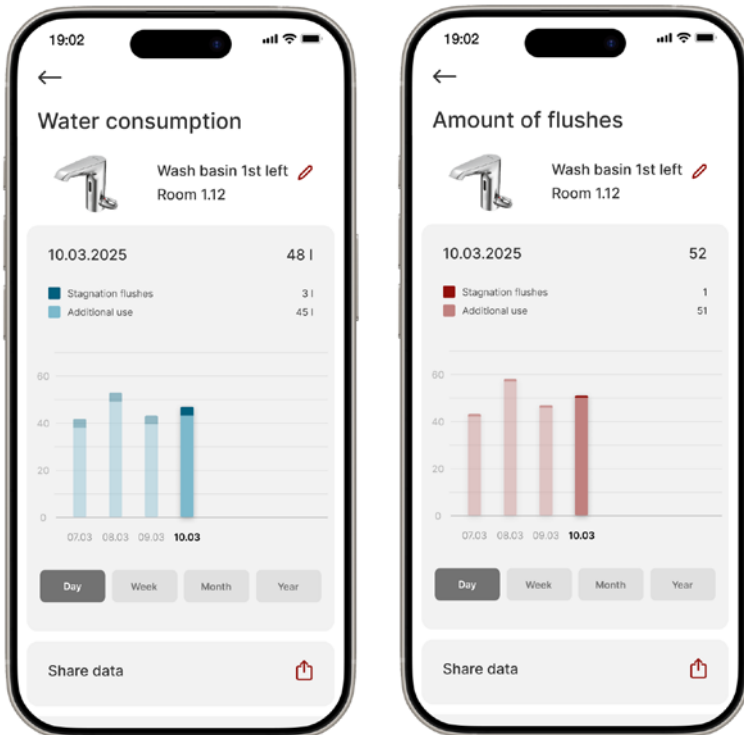
- New setting options for better plannability, accounting for frequency of use and reduced water consumption
- Scheduled stagnation flushes are possible using a convenient schedule series
- **NEW:** smart demand-based flushing if usage levels drop below a preconfigured value within a specific period of time

## 3. Activate thermal disinfection

- Via app, from a safe distance
- Selectable flow time
- Water flow starts only after confirmation dialog



4



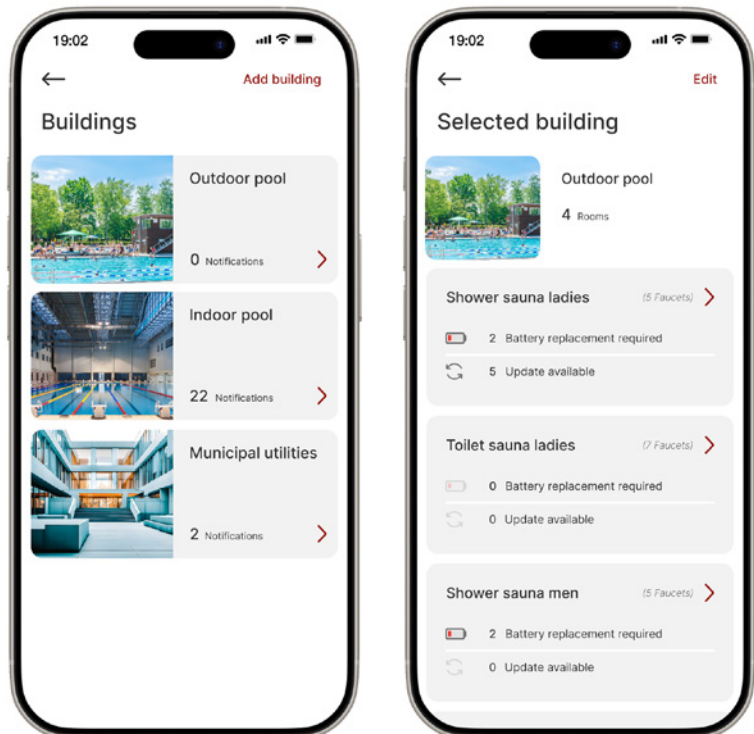
#### 4. Access and save log records

- Simplifies the record-keeping process needed for legal compliance
- Logging of activations and water consumption (calculated)
- Can be saved in the app, but also externally

5

#### 5. Building management in the app

- Create buildings and rooms
- Battery levels and actions required at a glance
- Access consolidated data from all faucets in a room
- Group manager for more efficient parameterisation and management of local faucet groups



[www.schell.eu/  
simply-connected](http://www.schell.eu/simply-connected)

**SCHELL GmbH & Co. KG**

Raiffeisenstraße 31  
57462 Olpe  
Germany  
Tel. +49 2761 892-0  
Fax +49 2761 892-199  
info@schell.eu  
www.schell.eu

**Customer support:**  
customer.service@schell.eu  
Tel. +49 2761 892-340

